

# ANNUAL REPORT 2025



Evangelical  
Lutheran Church  
in America



# ANNUAL CONGREGATIONAL MEETING OPENING LITURGY

Recognizing that our faith is a living, busy, active and mighty thing, may the grace of our Lord Jesus Christ and the communion of the Holy Spirit be with each of you.

**And also with you.**

Teach us to love you with all our heart, soul, mind and strength.

**Receive our prayer, O God.**

Descend on our hearts, that we may love others in the ways Jesus loves us.

**Receive our prayer, O God.**

Empower us to be enthusiastic in pursuing your vision for our congregation.

**Receive our prayer, O God.**

Move us to engage issues in our community in Christlike ways, and to pursue deep and authentic relationships with those with whom we serve and partner.

**Receive our prayer, O God.**

Strengthen us to face the barriers we encounter in doing your work, learning to work with others amid disagreement.

**Receive our prayer, O God.**

Give us the ability to adapt to the cultural, economic and social changes that occur in the neighborhoods we serve.

**Receive our prayer, O God.**

Guide us to be a healthy congregation that learns from its failures as well as its successes and offers wisdom to others.

**Receive our prayer, O God.**

As we strive to become the church that we proclaim to be, raise up leaders who focus on the gospel of freedom, forgiveness and reconciliation as given to us through God's indescribable act of love in the death and resurrection of Jesus Christ. Renew us daily in our baptism, that we may discover vitality in our relationships with you, each other and those we serve in the world.

**Amen.**

## Founded on Faith



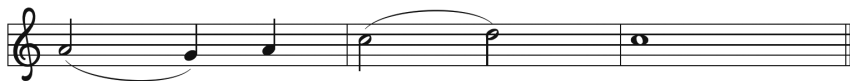
1 Found - ed on faith, the church— a - live by grace—  
2 Your cross, O Christ, re - news our life each day.  
3 E - quipped by prayer, we live the Spir - it's call.  
4 Grow - ing in grace for God's cre - at - ed earth,  
5 Found - ed on faith, called forth, em - pow' red to serve,



pro - claims the gos - pel here and ev - 'ry place.  
Bap - tized in you, we learn and teach and pray.  
Em - pow' red to serve with gifts, both great and small,  
we yearn for jus - tice, peace, and hu - man worth;  
we share God's end - less love with - out re - serve.



The word of God re - sounds through time and space:  
Fed by your love, with thank - ful hearts, we say:  
we bring the liv - ing hope of God to all.  
a world re - stored; a faith - ful, car - ing church.  
Then let us shout a - loud the liv - ing Word!



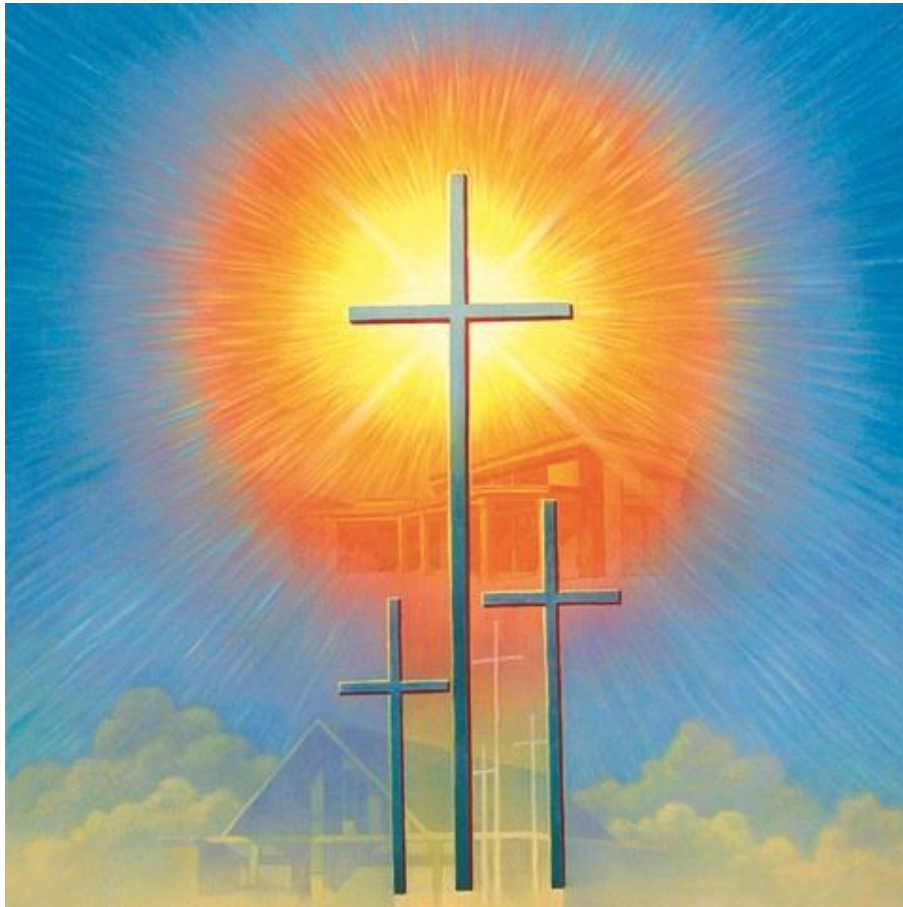
Al - le - lu - ia!

*All Creation Sings, 1048*

Text and music © 2017 Paul D. Weber, admin.  
Augsburg Fortress. Reproduced by permission.

# Christ Lutheran Church & Preschool

## Annual Report 2025



311 South Citrus Street  
West Covina, CA 91791  
(626) 331-5309 | [www.clcwc.com](http://www.clcwc.com)

# Table of Contents

Staff & Church Council	3
Agenda	4
Minutes of the 2025 Annual Meeting	5
Reports to the Congregation	6
Staff Reports	
Senior Pastor	6
TEEM Pastor	8
Director of Music Ministries	11
Youth Director	12
Preschool Director	13
Church Council	15
Trustees	16
Worship & Music	17
Membership	18
Evangelism	19
School Board	20
Budget & Finance	20
Mutual Ministry	21
Stewardship	21
Endowment	22
Stephen Ministry	22
Social Ministries	23
Blanket Buddies	25
Women of CLC	25
Prayer Chain	25
CLC Financial Statements for Fiscal Year 2025	26
Preschool Financial Statements for Fiscal Year 2025	34
CLC Approved Budget for Fiscal Year 2026	37
Worship Attendance	42
Membership	43
A Message from Presiding Bishop Yehiel Curry	44

# Christ Lutheran Church Staff

**Reverend Misael Fajardo-Perez**, Senior Pastor  
[pastormisa@clcwc.com](mailto:pastormisa@clcwc.com)

**Pastor Wenyang (Peter) Pan**, TEEM Pastor  
[pastorpeter@clcwc.com](mailto:pastorpeter@clcwc.com)

**Carina McVeigh**, Office Coordinator  
[clcwc@clcwc.com](mailto:clcwc@clcwc.com)

**Victoria Nieves**, Director of Youth & Family Ministry  
[youthdirector.victoria@gmail.com](mailto:youthdirector.victoria@gmail.com)

**Christina Bristow**, Director of Music Ministries  
[music@clcwc.com](mailto:music@clcwc.com)

**Michelle Turner**, Preschool Director  
[psdirector@clswc.org](mailto:psdirector@clswc.org)

**Nightingale Chen**, Pianist/Organist

**Editha Manalo**, Preschool Bookkeeper  
[bookkeeper@clswc.org](mailto:bookkeeper@clswc.org)

## Church Council

**Shirley Jett**, President *(second year)*

**Pamela Arnold**, Social Ministries *(first year)*

**Robin Hill**, Vice President *(first year)*

**Loretta Bennett**, Evangelism *(third year)*

**Yvette Ware**, Secretary *(second year)*

**Marisa Copeland**, Worship & Music *(third year)*

**Judith Hetzel**, Treasurer *(first year)*

**Ernie Johnson**, Stewardship *(fourth year)*

**Jeff Egbert**, Trustees *(first year)*

**Shannon Terry**, School Board *(third year)*

**Malinda Wisz**, Financial Secretary *(first year)*

**Joana Tseng**, Chinese Ministry *(first year)*

## School Board

**Sandra Batcheller**

**Bonnie Kasamatsu**

**Byron Kerns**

**Darlene Tang**

**Shannon Terry**

**Rose Webb**

# **Christ Lutheran Church Annual Meeting Agenda**

February 1, 2026

- I. Call to Order – Shirley Jett, Council President
- II. Opening Prayer – Pastor Misa
- III. Establish Quorum
- IV. Adoption of the Agenda
- V. Approval of the minutes of December 14, 2025 Congregational Meeting
- VI. Acceptance of the Annual Report to the Congregation
- VII. Election of Voting Members for Synod Assembly (May 29 – 30, 2026)
- VIII. Open Discussion
- IX. Closing Prayer – Pastor Misa
- X. Adjournment

# Minutes of December 14, 2025 Congregational Meeting

## Christ Lutheran Church

311 S. Citrus Street  
West Covina, CA. 91791

**Location:** Sanctuary

Meeting called to order at 10:57 a.m. by President Shirley Jett

**Opening prayer:** Pastor Misael Fajardo-Perez provided the opening prayer.

**Establishment of Quorum:** President Jett announced that 47 persons had signed in/registered at the meeting and that a quorum had been established.

**Adoption of Agenda:** There were no additions to be added to the meeting agenda and the agenda was unanimously adopted as presented. President Jett clarified that the agenda would also function as a ballot should it be necessary to take a ballot vote for any agenda items.

**Approval of February 2025 Annual Meeting minutes:** Attendees were asked to review the minutes of the February 2025 Annual Meeting. Motion by Jerry Webb; 2<sup>nd</sup> by Loretta Bennett to approve the minutes as presented. **APPROVED.**

**Election of new council members:** President Jett announced that the following persons would remain on council for the next year: Yvette Ware; Nancy Dege; Missy Copeland; Ernie Johnson; Shannon Terry; and Lorena Bennett. **The following persons were announced as nominees for Church Council: Pam Arnold, Jeff Egbert, Judie Hetzel, Robin Hill, and JoAnna Tseng.**

The President called for nominations or volunteers from the floor. Seeing none, nominations were closed. Motion by Georgia Miller; second by Bob Oaks to elect the five nominees above as presented. **APPROVED.** New council members were congratulated and asked to join the council in a brief organizational meeting in the church library immediately following the congregational meeting.

**Presentation of 2026 Budget: On behalf of the Budget Committee Interim Treasurer Judith Hetzel presented the 2026 Budget.** She discussed the process of developing this proposed budget and indicated that this budget is representative of the future of Christ Lutheran Church. Revenue is projected at \$550,000; expenditures are projected at \$549,000. Pastor Peter Pan also summarized the same in Mandarin for any non-English speaking attendees. Discussion ensued relative to differences in expenditures from the 2025 budget to the proposed 2026 budget. Items such as electric, water, gas, trash, custodian, and insurance were addressed and explained. Also, revenue from the Synod and ELCA for calling of an Associate Pastor speaking Mandarin was mentioned. Motion by Linda Ortega; second by Rose Webb to approve the budget as presented. **APPROVED.**

**Closing Prayer:** Pastor Misa provided a beautiful closing prayer that was most meaningful.

**Adjournment:** The Congregational Meeting adjourned at 11:21 a.m.

Respectfully submitted,  
Scott McGookin  
Recorder

# Reports to the Congregation

## Staff Reports

Senior Pastor: Pastor Misael Fajardo-Perez

### 2025 Pastor's Annual Report Christ Lutheran Church

*"The steadfast love of the Lord never ceases, his mercies never come to an end; they are new every morning; great is your faithfulness. 'The Lord is my portion,' says my soul, 'therefore I will hope in him.'" —  
Lamentations 3:22-24*

This past year brought significant challenges to our community. We felt the profound loss of longtime members—saints who nurtured your faith and walked alongside you through many seasons of life. We also navigated the difficult discontinuation of our K-8th grade school program. These transitions brought deep and real anxieties, fueled by a changing world and a sense of grief for what no longer exists here in the way it once did.

Yet, in the very midst of that loss and anxiety, I witnessed the many ways God met us, providing a mercy that never ceases.

As Lutherans, one of our foundational theological lenses is the Theology of the Cross. This teaches us that we find God's grace not just in triumphs, but in the face of suffering, in the midst of loss, and in the messiness of our human lives. It is precisely in these places of grief that God meets us, reminding us of a love that is steadfast and unyielding.

I have seen God breathing new life into us through the ministries we continue to carry out with deep love for our neighbors. We have also been blessed by new gifts in our midst. We welcomed our new Office Administrator, **Carina McVeigh**; our new Youth Director, **Victoria Nieves**; and our new Preschool Director, **Michelle Turner**. Their unique talents have already begun to enhance our shared ministry, and we are grateful for the energy they bring to CLC.

Furthermore, our music ministry remains a vibrant aspect of our worship. Under the leadership of **Christina Bistrow**, music continues to be also a great way to invite and welcome new participants to our worshipping community.

Perhaps the most exciting sign of God's "new thing" among us is our new designation as an **ELCA Strategic Site\***. This means our call to reach out to our Mandarin-speaking neighbors—using the beautiful gifts already present among our members—has been recognized and supported by our Synod and the wider Church.

Through this designation, we have received funding to strengthen this innovative and transformational outreach. We are profoundly grateful for the continued ministry of **Pastor Peter** among the Mandarin-speaking members of our 11:15 a.m. service. This grant validates our mission to be a diverse, culturally rich community that enriches both our congregation and our neighborhood.

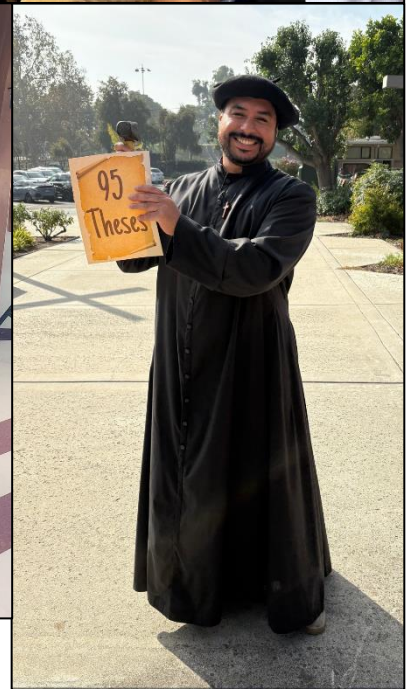
As you look through the pages of this annual report, I invite you to see the evidence of God's continued faithfulness. You will see how we are being sustained and equipped with the hope and the gifts needed to carry God's love out into the world.

Our ministry may look different than it did in years past, but there is no doubt that God continues to shower us with mercies that are new every morning. It is a privilege to serve as your pastor and to be your partner in the wonderful ministry to which God has called us.

May we be filled with hope and confidence in God's continued work in and through us.

In Christ,

*Pastor Misa*



---

\* **What is a Strategic Site?** Strategic Ministries are new and ongoing ministries of congregations. They minister among diverse communities and cultures, and historically marginalized communities. Grant funds strengthen new, innovative, resourceful, and transformational ministries and outreach programs that enrich the viability of the congregation, the health of the community, and the evangelical mission of the whole church.

# TEEM Pastor: Pastor Wenyang (Peter) Pan

## Chinese Ministry 2025 Annual Report

### Vision

1 Isaiah 61:1-3

<sup>1</sup> The Spirit of the Lord God is upon me, because the Lord has anointed me **to bring good news to the poor**; he has sent me to **bind up the brokenhearted**, to **proclaim liberty to the captives**, and **the opening of the prison to those who are bound**;

<sup>2</sup> to **proclaim the year of the Lord's favor**, and **the day of vengeance of our God**; to **comfort all who mourn**;

<sup>3</sup> to grant to those who mourn in Zion—to **give them a beautiful headdress instead of ashes**, the oil of gladness instead of mourning, the garment of praise instead of a faint spirit; that they may be called oaks of righteousness, the planting of the Lord, that he may be glorified.

### Spiritual Reflection

The year 2025 was a season of growth, renewal, and a deeper experience of God's love for our Chinese Ministry. We were strongly feeling the power of the gospel and deeply recognizing its real meaning. We are still learning and growing; it is a long way to go. We feel God loves us so much that we want to continue spreading God's love, mercy, and grace. Rather than prioritizing numerical growth or large-scale programming, we were prayerfully led to return to the foundation of ministry: care, presence, and relationship. We were reminded again and again that the gospel is not only proclaimed through words, but is most powerfully lived out through authentic relationships.

"We love because God first loved us." (1 John 4:19)

### Core Ministry Focus: Care and Relationship

In 2025, our primary focus was intentional pastoral care and relational discipleship. We came to understand more deeply that evangelism is not a single event, but a long journey of walking alongside others. Through home visits, shared meals, prayer, and faithful presence, we sought to embody Christ's love in everyday life.

"Bear one another's burdens, and in this way you will fulfill the law of Christ." (Galatians 6:2)

### Congregational Growth and Renewal

Throughout the year, God continued to bring new members into our Mandarin congregation. Our growth was steady and gentle, marked by deeper relationships rather than rapid expansion. We experienced a warmer spiritual atmosphere, stronger connections, and hearts increasingly open to God.

"Growing up in every way into him who is the head, into Christ." (Ephesians 4:15)

### Ongoing Pastoral Care and Inclusive Ministry

In 2025, we continued walking alongside several friends from the LGBTQ+ community. Some have already come to faith, while others are still being cared for and accompanied pastorally. If individuals are ready to participate more regularly, we plan to prayerfully establish a dedicated small group to provide spiritual support and community.

"Welcome one another, therefore, just as Christ has welcomed you." (Romans 15:7)

## Outreach: Dinner church – Thanksgiving, Christmas, and New Year

We hosted a Thanksgiving Dinner Church with approximately 35 participants. Members cooked together and shared testimonies in a meaningful and joyful atmosphere. Christmas was also celebrated through shared meals and fellowship.

“They broke bread at home with glad and generous hearts.” (Acts 2:46)

## Preparation for Future Ministry

In mid-December 2025, we relocated to housing directly across from the church as prayerful preparation for deeper ministry and community outreach in 2026.

“Enlarge the site of your tent.” (Isaiah 54:2)

## Mission in 2025

### • Pastoral care each month

1. In-person visits to 5-10 families
2. We chat connects 40-50 people
3. Chinese Service 4 times
4. English Service 2 times (one preside + preach & one youth message)
5. Attend Preschool Chapel 4 times and preach 1 time
6. Attend English bible study 4 times
7. Attend Confirmation Class

### • Christian Education

1. Friday Fellowship: Every Friday evening, around 10-12 people gather to read the Bible, share food, connect and take care of each other, discuss the Bible, and worship together. One chapter per meeting, Matthew to John
2. We started a candlelight prayer gathering every Tuesday evening. It was a wonderful time for the people who attended this prayer night. We were renewed and grew through prayer and worship together. We felt relief from our pressure and got strength from God; it is a blessing for our church. Each time 4-7 people attend.
3. We start the prayer meeting every morning, 7:30-8:30 a.m., Monday through Friday, via Zoom. We read one chapter of the Psalms each time, we pray for our church, our brothers and sisters, our society, our country, and God’s kingdom.
4. Pastor Pan sends daily devotional messages to our brothers and sisters.
5. We start a Bible reading group. We plan to finish reading the whole Bible in 1 year, each day reading around 3-4 chapters, with around 7 people together.

### • Church improves and grows

1. We have two new co-workers attending our Chinese Ministry, they help us a lot, they help us preside, read the Bible, sing the hymns together, and many other needs.
2. 10 people have become our church members.
3. 20 new people joined our Mandarin congregation, including 4 families, 6 children

### • Professional growth

1. Pastor Pan has completed all of the course requirements for the TEEM program, and is in the process of internship and waiting to be ordained around June or July of 2026

- **Mandarin Congregation Activities and Outreach of 2025**

- **We celebrate our brothers and sisters' birthday every month**

- 01/21 Joshua Ivan Pan's birthday: we invite around 40-60 people to celebrate together at the fellowship hall, through this activity we spread the gospel to them and invite them to our church
- 02/25 UCI student fellowship in chapel room, around 20 people attend
- 03/03 Small cruise retreat with other 2 young families, around 9 people together.
- 04/03 hiking with another 2 families, around 10 people hiking together, like a fellowship time.
- 05/11 Celebrate Mother's Day together, a total of 7 mothers.
- 06/23 Celebrate Father's Day together, a total of 4 fathers.
- 07/04 July 4<sup>th</sup> celebration party at Laguna Beach, we had a great time together, a total of 25 people attended, we spread the gospel to them and invited them to our church
- 9/15-9/18 Attend ELCA Chinese Pastor's retreat in Houston, around 40 pastors, 100 people attend.
- 09/26 Watch football together in Nogales High School, around 8 people.
- 10/04 Blessed Animals Day, around 20-30 families attend. One brother attended our Chinese congregation after that.
- 10/06-10/09 Small retreat with the other 5 families in Temecula, around 12 people together.
- 11/28 Thanksgiving gathering, around 40 people attended, it was a good time to bonding and spread the gospel, we invited them to our church
- 12/06 Wonderful Dinner Party time, around 40 people together, everyone enjoyed and felt love from God, we sang the hymns together, it was a great bonding time. We prepared gourmet food together, and I had a short message time too.
- 12/24 Christmas Eve gathering, around 30 people attend.
- 12/31 Celebrate Happy New Year, around 12 people attend.



## Director of Music Ministries: Christina Bristow

The year 2025 was an impactful and fulfilling year for the Music Department of Christ Lutheran Church, West Covina. Musicians, both vocal and instrumental, enriched our services throughout the year, especially during the Lenten, Easter and Christmas seasons. This marked my eighth year at Christ Lutheran and it was such an enjoyable year filled with beautiful music making that glorified God.

Throughout the church year, the Chancel Choir had weekly rehearsals to prepare musical offerings in its role of leading our worship service each Sunday. Each week, the choir provided beautiful and meaningful special music especially suited to the season and we give our deepest thanks to all the choir members for the untold hours of dedicated service to God.

In the summer, while the choir was on break, various members of the chancel choir offered their voices in special music each Sunday. We also had a few Sundays of "Summer Choir" anthems where "new" or guest choral singers were invited to join and would arrive on a Sunday morning, learn a new song, and perform it for the 9:30am service. After the summer, the choir held its annual Fall Retreat at the home of Missy Copeland. It was a great time of rehearsal, devotions, and food! The new choir year was off to a terrific start. Many thanks to Missy and all those who contributed to making this event truly special!

The Christmas/Advent season was marked by a Church Christmas Concert on Dec. 7. This concert featured the church's Chancel choir and worship band, Edified Church, and the Mandarin speaking congregation. This concert was a huge success, and it was inspiring to all who attended. The free ham dinner after the concert was very well attended and a huge blessing for those who attended the concert. Thank you to Shirley Jett and church member volunteers for helping provide that dinner for us!

The Blended Worship Team continued their dedicated and excellent work throughout the year. Thanks to Nightingale Chen, Oscar Rodriguez, Jimmy Beall, Kevin Karagozian and Izaak Weatherwax for all for a wonderful year of contemporary and blended Christian music and worship leadership.

Our deepest appreciation goes to Robin Hill, Diego Alvarez, and Andrew Bristow for their abilities in putting on the live-stream of our weekly Sunday services on YouTube and Facebook each week as well as running the song-show program for the in-person sanctuary projectors. Also, a huge thank you to Karen Mora and Carina McVeigh for putting together the bulletin and song-show program each week.

All those involved in the Music Department send out in a big "THANK YOU!" to the entire congregation for your warm support for our music program. May God continue to shower our church with His blessings throughout the coming year.

Submitted by,  
Christina Bristow  
Director of Music Ministries

## Youth Director: Victoria Nieves

Throughout my time here at Christ Lutheran, the Youth & Family Ministry has focused on consistency, relationship-building, and creating opportunities for the youth to grow in faith and service. Our youth group has maintained steady attendance and some kids bring their friends too. I am proud to say that each of them have shown genuine curiosity about the Scripture and regularly participate in discussion and asking thoughtful questions during lessons.

One of the major highlights of the year has been the growth of service opportunities. The youth participated in multiple service projects, including assembling care kits and supporting local food bank initiatives through partnership with Action Food Pantry. These projects have been especially impactful, giving youth hands-on ways to live out their faith while serving others. Many of these service experiences were youth-led, completed with great enthusiasm, and the kids have expressed great interest in doing more of them. They got so excited they started brainstorming ways to provide more help!

Another encouraging development has been the steady organic growth through relationships. Youth have invited friends, two of whom have continued attending regularly. This relational approach has helped create a welcoming and inclusive environment where new youth feel comfortable joining and participating.

Looking ahead, I am planning a fundraiser through Chick-Fil-A for the youth group and will be continuing to expand opportunities for the kids to growth their faith. Plans include increasing the frequency of youth gatherings, offering more service projects throughout the year, and helping youth become more confident navigating Scripture through repeated exposure and practice. Fundraising efforts, such as seasonal youth-led events, will support ministry activities while encouraging teamwork and responsibility in the youth.

Overall, the year has been marked by faithfulness, resiliency, and excitement for what God is doing within our youth community. I am grateful for the congregation's help and the parents' willingness to participate with youth group events. Thank you for your prayers and support!

Submitted by,  
Victoria Nieves  
Youth & Family Ministry Director  
Christ Lutheran & St. Mark Lutheran Churches



# Preschool Director: Michelle Turner

## Christ Lutheran Preschool Annual Report Current Enrollment: 63

### Mission and Purpose

Christ Lutheran Preschool remains steadfast in its mission to provide a Christian education that emphasizes academic excellence, the Gospel of Jesus Christ, and love and service in His name. Throughout the past year, our program has continued to nurture the whole child spiritually, academically, socially, and emotionally while fostering strong connections among our students, families, church leadership, and congregation.

### Program Overview

Christ Lutheran Preschool serves children ages of **2–5 years old** and currently consists of **five classrooms**. We offer flexible scheduling options including **two-day, three-day, and five-day programs**, with both **half-day and full-day** options. Our **hours of operation are 6:30 a.m. to 6:00 p.m.**, allowing us to meet the diverse needs of working families in our community.

Within our preschool environment, teachers facilitate the **“Big Day” Scholastic curriculum**, which supports developmentally appropriate learning while fostering growth across multiple domains. The curriculum emphasizes social-emotional development, cognitive skills, language and literacy, physical development, and creative expression, contributing to the overall growth of each child.

### Spiritual Development and Christian Education

Faith formation remains the foundation of our preschool program as we integrate weekly bible stories utilizing the Voyages Bible story curriculum for children. We also implement weekly chapel services. Pastor Misael Fajardo-Perez leads chapel and shares the Word of God, and brings Bible stories to life by using props and through music and movement. These experiences encourage joyful praise, active participation, and a deeper connection to God. Pastor Misa also leads students in prayer and extends invitations to families to attend church services, strengthening the relationship between the preschool and the congregation. By intentionally involving parents and church members, we continue to promote unity and reinforce that we are one connected entity serving Christ together.

### Facility and Classroom Repairs

During the past year, the preschool experienced both major and minor facility challenges. In November, **Room 4 sustained water damage**, requiring the classroom to be shut down. Student health and safety remained our top priority, and students from Room 4 were temporarily combined with Room 5. Teachers worked diligently to ensure continuity in learning and to help students feel secure and comfortable during this transition. In December, **Room 2 experienced minor water damage**, resulting in moisture in the walls. Repairs have since been completed, and Room 2 is now fully operational and back in use. Work on Room 4 is ongoing, and we remain committed to restoring the classroom to ensure a safe and high-quality learning environment. There were other repairs in the preschool such as bulletin board replacements, staff restroom fixtures and roof patching.

### Staffing and Professional Growth

This school year, we had an increase in enrollment and hired a new staff member, Ms. Isabella Murguia. We currently have 8 staff members. Our teachers are dedicated, committed, and passionate about providing a safe, nurturing, and engaging learning environment. We believe that continued professional development is essential, therefore Christ Lutheran preschool teachers continue to participate in various

workshops and conferences, as well as staff meetings with the director. This helps our teachers to expand their skills, stay current with best practices, and bring new energy, ideas, and creativity into the classrooms.

### **Curriculum Enhancements and Innovation**

In our commitment to continuous growth and improvement, we believe it is essential to evolve as a program to meet the needs of every student. This year, we opened a **S.T.E.A.M. Room**, designed to promote **Science, Technology, Engineering, Art, and Math**. This space allows for intentional, hands-on learning experiences that encourage curiosity, creativity, problem-solving, and critical thinking. By creating purposeful and engaging learning opportunities, we continue to support each child's development while maintaining a high-quality preschool program.



### **Fundraising and Community Engagement**

Throughout the school year, Christ Lutheran Preschool held four small fundraisers, various school events, holiday parties, and some Saturday special events as well. Staff participation is always encouraged, and events were promoted to preschool families, the church congregation, and via social media. Our goal is to raise funds to replace carpet and flooring in all classrooms. We also utilized school social media platforms to share information, photos and videos highlighting school and church events, classroom activities, and the positive learning environment we cultivate. As a result of our social media presence, we have gained many new families who were drawn to our program after seeing the joy, engagement, and sense of community at Christ Lutheran Preschool.



### **Moving Forward**

As our preschool continues to grow, we are thrilled to see families happy and children thriving in their safe learning environment. I am currently seeking an Outdoor environment teacher. This position will fulfill many responsibilities such as preparing AM and PM snacks for students, covering teachers for their breaks, and assisting the director and stepping in when needed. The staff and I remain committed to academic excellence, faith-based education, intentional learning experiences, and strong community partnerships. With God's guidance and the continued support of our school board, staff and congregation, we look forward to another successful year of growth, service and faithful education.



Respectfully Submitted,  
Michelle Turner  
Christ Lutheran Preschool Director

# Church Council

This past year has been a busy year, and we have seen some major changes. Pastor Misael Fajardo-Perez has continued as our Pastor and Pastor Peter Pan, TEEM Pastor, has continued leading the Mandarin congregation. We have continued with live streaming Sunday services and special services as well. The Annual Reports for 2024 were reviewed at the February Congregational meeting.

Baby Boomers continues to meet on the third Tuesday of every month for lunch. It is a great time for fun, food and fellowship. The Men's and Women's Bible studies continue the first Saturday of every month.

On February 27, 2025, Karen Mora submitted notice of her intention to retire as the Office Coordinator at the end of March. Pastor Misa appointed Pam Arnold and Yvette Ware as a recruitment team to begin searching for a new Office Coordinator. Interviews were held in May and June. Carina McVeigh was hired and started her employment as our new Office Coordinator on June 12, 2025. We are very blessed to have found her. The Recruitment Team started searching for a new Youth Coordinator shortly after we hired Carina. Eventually, we hired Victoria Nieves as our new Youth Coordinator.

During Lent, we had dinner before each Wednesday night service. We used the Holden Evening Prayer service and Pastors from local Lutheran Churches rotated giving the message each week. On Easter Sunday, we again had an Easter Egg Hunt for the children. It is so much fun to watch the children running around, looking for eggs.

At a special congregational meeting in May, the congregation was advised that there was a very real possibility that our Elementary School would need to close due to low enrollment and lack of funds. There was interest from another private school in the area, South Hills Academy, in investing money in our school to keep it open, but there were many questions that needed to be researched. No decision was made and the meeting was continued on June 1, 2025. At the June 1 meeting, the congregation was informed that the Church Council could not reach an agreement with South Hills and the School Board decided to officially suspend operation of the kindergarten through 8th Grade classes of our Elementary School. The last day of school was June 5, 2025, and a meeting was held with the parents of the students in late May to advise them of the closure. Prior to the meeting with the parents, a meeting was held with all employees to advise them of the suspension of all elementary grades and the last day of employment would be June 5. Eventually, an agreement was reached with South Hills Academy to rent the school buildings as a second campus for their school. A three-year lease was signed on September 5, 2025.

During the summer, the sanctuary roof was replaced, and we installed new air conditioners for the sanctuary and fellowship hall. In July, we held a "Celebrate Your Birthday" event with all members of the Church invited. It was well attended and all had a great time. It is anticipated we will continue with this event. Rally Day was held on September 7.

In October, we again sold Christmas Wreaths as a fundraiser with all profits going to the air conditioner fund. On November 21, 22 and 23, the Holly Jolly Christmas Boutique was held, hosted by Paula and Larry Peterson. The Choir Concert was on December 7, followed by the ham dinner, prepared by Pam Arnold, Tammy Wagstaff. and Shirley Jett. At the Congregational meeting on December 14, we passed the budget for the year 2026 and elected new council members. As I said, it was a very busy year.

Respectfully submitted,  
Shirley Jett  
Council President

# Trustees

## 2025 Required maintenance:

- Sprinkler valves, pipes, and related components be replaced or repaired as needed.
- Replace various lightbulbs.
- Quarterly work parties

## 2025 Projects Completed:

January: During January, live streaming issues arose because of difficulties with the motherboard. The current system was corrupted. The cost of repairs was approximately \$2,000. We also purchased and replaced the 2 ranges in the church kitchen at a cost of \$900.

March: In March, we started obtaining bids for replacement of the roof located between the sanctuary and the fellowship hall. Three contractors—Clear Roof, Essential Roofing, and Pacific Mountain—provided estimates. In March, we began reviewing the possibility of South Hill Academy managing our school.

A congregational meeting took place on May 18 to decide whether to continue talks with South Hills Academy about potential uses for the school buildings, which will be left vacant after the school's closure. Preschool was not part of this.

June: Continuing negotiations with South Hills, this time, for rental of the school property. An organization named Epic Academy also expressed interest in leasing the school property. However, it was determined that they were too risky without the necessary operating capital. It was also determined that Finish Line Plumbing, who had done the pipe repair to the driveway, had done an inadequate job in doing patch repairs. I drafted a settlement demand letter for Finish Line, had it approved by the church council, and then sent it to Finish Line. Reagan Paving had previously provided us with a repair estimate totaling \$2,200.

The church council had also agreed that of the bids for the roof, Pacific Mountain was the best bid in the amount of \$26,597.23.

On June 9, Rose Sommers Webb and I met with the Principal of South Hills Academy at their campus to tour the facilities. This visit confirmed that South Hills Academy has a substantial student body and is financially stable.

July: The church council decided to move forward with the rental agreement. Since there was a question regarding the school roof, I contacted Pacific Mountain Roofing to obtain an estimate for information purposes for the school roof. The estimate came in at \$349,000.

Also, because of possible liability exposure regarding trees that were in bad shape and could be a danger to preschool students, we hired Green Tree Trimming Service in the amount of \$8,000 to remove some dead trees, and to trim others both on the preschool property and the church. The costs broke down to \$6,500 for the preschool, and \$1,500 for the church.

In August, the chapel and music room experienced an issue with the AC unit, but it was fixed. The Boy Scouts, as part of their "Navigating the Eagle Scout Service Project," also contacted us about doing some work on our gazebo. Their intent was to replace the roof, reinforce the structure, and paint it. To date, there has been no response from them to follow up.

Work began in August to replace the sanctuary's air conditioning units at the church. We signed a retainer agreement with Pacific Mountain Roofing and paid a \$1,000 deposit. The roof replacement was scheduled to take place after the AC work is completed. The work was subsequently done on both the roof and the AC. The cost for the AC in Sanctuary totaled \$120,000.

Also in August, Finish Line wanted to come out to do repairs to the driveway. It was scheduled but no one showed up. The event was moved to a new time. When they came out, there was a celebration of life event occurring, and they could not do the work. "M" agreed to pay us \$2,200 per Reagan Paving estimate.

September: Due to the school closure, we were required to terminate the lease on a storage trailer and arranged for its removal by the leasing company. After negotiations, we reached an agreed figure in the amount of \$4,621.52 for removal of the trailer, which was less than they originally requested.

Reagan Paving finished the pavement project for the agreed price of \$2,200. The bill was given to "M" at the Finish line. He insisted on dealing exclusively with Pastor Misa and, following his lawyer's advice, planned to request a form, a release to be signed. He would not agree to resolve the issue with me.

In October, the school kitchen experienced a flood. Diver Dan, a plumber from the area, was asked to clean out the pipe.

November: We had a problem with the speakers in the sanctuary which required replacement. The cost is approximately \$4,600 to replace. The issue is still pending.

I met with Michelle, the preschool director, to address water damage and minor mold in classroom 2 of the preschool. There were also moisture concerns in classroom 4.

December: In early December, Darell Broer from Puroclean and I evaluated the remediation and repair costs for classroom 2 and reviewed potential damage in classroom 4. Their estimate came in at \$6,900. We subsequently decided to go in a different direction, keeping repairs in house. Alliance Environmental conducted testing in classroom 2 for \$695.00. Remediation and repairs have been completed in classroom 2 but work in classroom 4 is still unfinished because the roof needs to be replaced and the source of the water must be identified.

Submitted by Gerald Webb

## **Worship & Music**

The past year, worship and music continued to enrich our services with new and exciting music, lessons, sermons, and worship events. Pastor Misa, Pastor Peter, Christina, Nightingale, the Chancel Choir, and the Praise Band brought joy and insight to our worship for our church community. More changes to the Liturgy, including adding the beautiful setting by Marty Haugen as well as Setting 6 which has been popular, were continued this year. The Liturgy settings are changed according to the different church seasons and add variety to our service.

During Lent, we continued with Holden Evening Prayer service as in the previous year. Money collected during the Lenten services went to the Fire Relief Fund to help those affected by the January fires in our area.

Based on requests from members, we began Favorite Hymns Sunday. On the fifth Sunday in a month, members' favorite hymns are used during the service. It has been fun to bring back some of those songs.

Throughout the year, Bob has led ushers to smoothly run our services during communion and offering. We are always looking for more volunteers. The altar guild once again made the church a beautiful place at Easter and Christmas with lilies and poinsettias, and kept the candles burning, the correct paraments on the altar, and made sure there were always enough cups, wafers, and wine for communion.

Community outreach has been important this year. During the Christmas Church decorating day, we had members from the Mandarin congregation, parents and students from the preschool, and newer members of our church helping to decorate. The tree was a true community effort, including Pastor Peter's young son. This year for the Christmas Choir Concert, the choir was joined by a long-time student of the school, who played some amazing piano, and the Filipino and Mandarin church choirs. It was a lovely evening of community and song for the holiday. A great ham dinner was served at the end of the evening.

We are grateful that our church continues to grow in spirit and song. It has been a great year.

Joyfully submitted,  
Missy Copeland  
Worship & Music

## Membership

Membership Committee Responsibilities:

- Visitation to inactive members
- Assist in new members' class
- Help discover and use congregation's spiritual gifts

Membership Committee 2025 Budget: \$3,000

- Postcards: \$1,517.50
  - 2,500 postcards ordered and mailed (April 1-4) to neighboring cities to increase church membership while promoting Easter Sunday's Service and Christ Lutheran School.
- Thrivent Action team grant received \$250
  - Easter Egg & Candy ordered: \$185
  - Families with high school youth helped fill 250 plastic eggs with candy for Easter Egg hunting on Sunday, April 20.
- \$25 In-N-Out gift card
  - Google Form was created, used to register church visitors and get names for drawing for the chance to win the gift card

Submitted by Olga Alvarez

# Evangelism

In March, I shared my faith story on Ash Wednesday. I also began working on applying to get a booth in various farmers' markets. The process was slow and I didn't get approved for anything until July. In March and April, our committee (Pastor, myself, and Suzanne Yee) viewed a synod Zoom workshop called 'Neighbors Together'. We implemented one idea, mapping the area close to church to identify possible partners. We contacted the Senior Center at Cortez Park and were unable to establish a partnership.

We began our outreach on August 2, attending weekly through August 23rd. The cost was minimal. We labeled and gave out water bottles, a welcome gift in the hot summer sun! We were blessed with good participation. Thank you to all who volunteered and donated water bottles.

Our church offered a Blessing of the Animals on October 4, which was well received.

We plan to apply to get a table at the West Covina Farmers' market in the spring, also for six weeks. That will be coming soon, listen for updates and let me know if you would like to help in any way.

Yours in Christ,

Loretta Bennett  
Evangelism Chairperson



## **School Board**

The 2024-2025 school year was a very difficult period for Christ Lutheran School. The school year started in August 2024 with approximately 67 students and a full staff. Throughout the Fall semester, CLS struggled with low enrollment, financial constraints, and other concerns from parents and staff. By the beginning of the Spring semester, enrollment was down to 55 students.

It was determined by the school board in early January that it might not be possible to open the school for the 2025-2026 school year. Several meetings were held with members of the school board and other private schools in the area. Initially, there were three schools who showed interest in possibly investing in our school, but eventually only one had any real interest: South Hills Academy. A sub-committee of school board members, Pastor Misa, and the Head Trustee was formed, and several meetings were held with the leadership of South Hills.

Towards the middle of May, we determined there were not enough students enrolled for the 2025-2026 school year to enable the school to continue, and there was insufficient time to allow us to confidently enter into any type of agreement with South Hills Academy that would allow us to open the school for the 2025-2026 school year. In late May, a letter was sent to school parents and employees advising them the school board made the difficult decision to suspend Christ Lutheran Elementary School, but that the preschool would continue to be open.

A meeting was held with any parents who wished to attend, and questions were answered to the best of our ability. A similar meeting was held with all employees.

The last day of school for Christ Lutheran School was June 5, 2025. All employees were required to turn in their keys on that day, at which time they received their final paychecks. In addition, each employee was given a bonus, which was made possible through donations from the CLC & CLS communities.

Currently, Christ Lutheran Preschool continues to operate with Michelle Turner as the Director. She is doing a great job and enrollment is currently at 63 and continues to grow. The preschool is financially stable and able to pay all their own expenses.

This has been an extremely difficult year for all of us who served on the school board. Most of us were parents of children who had attended our school, and it was not easy to make the decision to suspend operations of the elementary school, but we all felt that financially it was the right decision.

Respectfully submitted,  
Shannon Terry  
School Board President

## **Budget & Finance**

Please see the Treasurer's Report on page 26.

## **Mutual Ministry**

The Mutual Ministry Committee met periodically throughout the year last year. This committee meets with the called staff (Senior Pastor) approximately once per quarter, or as needed, with the task of confidentially listening and encouraging, sharing and communicating, and reviewing and revising. It is through these activities that the ministry of the whole body of Christ can be strengthened.

The work of the Mutual Ministry Committee is confidential. In 2025 there were some incidents and conflicts, but no recommendations were made to the full Church Council. In Q4 the Committee met with the Assistant to the Bishop discussing various ministry, leadership, and organizational priorities and goals for the church and pre-school. On all matters, and at all times, the President and Vice President of the Church Council were aware of the topics and concerns and the discussions of the Committee.

Respectfully submitted,  
Scott McGookin  
Chairperson, 2025 Mutual Ministry Committee

## **Stewardship**

When we accept the Triune God, and Christ's death on the cross, His resurrection and ascension back to God the Father, we as disciples who have responded to Him, become stewards of His creation, intelligence, talents, relationships, creativity, time, vocation, possessions and finances. We must use all this wisely and for Godly purposes. This is the key to being His disciples, faithful to a loving God and others as He commanded. Our Savior has offered us a life of eternal joy in the presence of God. We must choose to be faithful stewards with giving hearts. We marvel at His countless gifts and must respond.

During 2025 I offered several "Temple Talks" to explain and encourage participation in various duties to help the ongoing ministry of Christ Lutheran Church. Our life commitment is to put God first and all else second. I also offered bulletin inserts and emails with the help of Karen Mora, our previous Office Coordinator. I have plans for several more in 2026. I would humbly recommend to all to prayerfully consider how to give resources to the church in 2026.

Another thought is to mention the Bible Studies, both the weekly Lectionary Studies led by the pastor, and the monthly Men's and Women's Bible Studies lead by myself and my wife. The men have completed the books of Romans and Hebrews. The women have studied six minor prophets, and are now working on six small New Testament Letters.

As stewards of our relationship and responsibilities to God and others in loving outreach in prayer and service, I encourage all to enthusiastically reach out to former attendees. Please tell them we love them, miss our relationship with them, and encourage them to return and worship the Lord together with us. They are important to God and to us.

An additional suggestion would be to have a monthly get-together, possibly with snacks or a light meal, good conversation and some type of program to help stimulate and encourage relationships and attendance.

Submitted with love,  
Ernie Johnson

## Endowment

The Endowment Fund, established in 1999, is a unique opportunity for congregation members to ensure the future funding of Christ Lutheran Church projects and activities that further the Mission of our church. Donations go to the principal of the Endowment Fund. The Christ Lutheran Bylaws state that the principal can never be touched (unless there is a major catastrophe), which allows the fund to grow. Earnings from the fund are used for ministry and mission, outreach projects, and activities as recommended by the Endowment Committee and approved by the Church Council.

During 2025, \$2,700 in funds were approved for distribution as follows:

- \$1,500 for Preschool Director Michelle Turner to attend 2025 ELCA Schools & Learning Centers Conference
- \$5,000 for school marketing
- \$ 700 for Tanzinian ELCA Pastor Nordphrey's continuing education towards his PhD. from Claremont School of Theology

2025 Endowment Fund Committee Members:

Yvette Ware (Chair)  
Sandra Batcheller  
Meredith Parry  
Pastor Misael Fajardo-Perez  
Shirley Jett (2025 Congregational President)  
Robin Hill (2025 Congregational Treasurer)

Respectfully submitted,  
Yvette Ware  
Committee Chair

## Stephen Ministry

Stephen Ministers have been trained to help you walk through a crisis in your life. We do not “fix” things; we do not tell you “how” to do things. Instead, we've been trained to listen as you “vent” and then together, we try to “work things out.” Our program is under the guidance of Stephen Ministries and supported by Christ Lutheran Church.

We are currently meeting once month to discuss our readings in the book, Caring Assertiveness. This book has been published by Stephen Ministries. It helps us review and refresh some of the things we learned in our training.

If you or a loved one is dealing with challenges in your life and would like a Stephen Minister, contact Pastor Misa or Bonnie Kasamatsu. Men are cared for by our male Stephen Ministers and Women are cared for by our female Stephen Ministers! It is a one-on-one ministry, and everything is kept confidential.

Submitted by Bonnie Kasamatsu

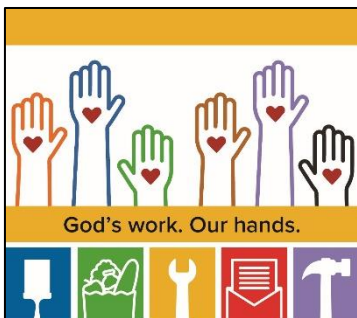
# Social Ministries

In 2025, Social Ministries continued to support our congregation and the surrounding community through prayer, service, and outreach. The following activities highlight the work accomplished this year:

## Food Pantry

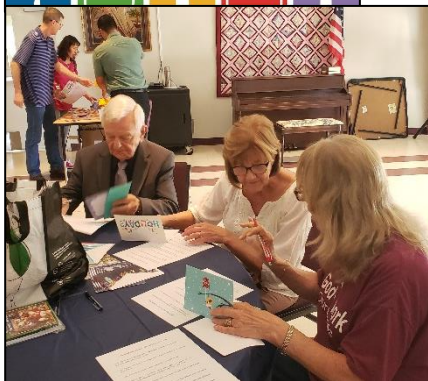
Food donations were collected on an ongoing basis throughout the year and delivered to the ACTION Food Pantry, which serves low-income families in our local community. The ACTION Food Pantry is located at Grace Lutheran Church on Covina Boulevard in Covina.

Hundreds of cans and boxes of food were donated during the year. In the fall, Christ Lutheran Church and Pre-school once again participated in a Thanksgiving food drive. The drive resulted in the collection of 340 cans of yams for Thanksgiving baskets.



## God's Work Our Hands – Day of Service

During God's Work Our Hands Day of Service on October 12, 2025, members gathered after the worship service in Nelson Hall to participate in several hands-on service projects. Activities included preparing items for community outreach by assembling hygiene kits (including socks, washcloths, toothpaste, toothbrushes, shampoo, conditioner, and soap) for individuals experiencing homelessness, creating Thanksgiving placemats and addressing Christmas cards to be distributed to a convalescence hospital and senior living community during the holiday season.



We also filled church and pre-school information baggies with treats to be passed out during our annual

Trunk or Treat Halloween celebration. This day of service was a meaningful opportunity for fellowship while serving others in Christ's name.



## Trunks of Treats

Christ Lutheran Church and Preschool once again participated in the annual Trunks for Treats event on Halloween night. The church parking lot was closed to car traffic as members of the church and preschool decorated their car trunks for Halloween and passed out candy to children and families from the community. This event provided a safe and welcoming environment for children to trick-or-treat and enjoy time playing with friends.



The event was well attended, with twelve decorated cars passing out candy and over 500 community members participating in the evening's activities.



## Christmas Angel Tree Project

During the Christmas season, Christ Lutheran Church partnered once again with the Pre-School to support children in need through the Christmas Angel Tree Project. Through the generosity of our congregation, we were able to provide toys (approximately 75) and gift cards (approximately 25) to Ark Foster Home, helping to bring joy to many children during the holidays.

Respectfully submitted,  
Pamela Arnold  
Social Ministries Chairperson



## **Blanket Buddies**

2025 saw the closing of Blanket Buddies. During the year the material and tools were donated to other groups who are sewing blankets to be donated. The final blankets were donated to two outreaches: 17 boys' blankets to San Gabriel Children's Center and 16 women's blankets to Stepping Stones. 21 crocheted lap robes were taken to Rowland Convalescent Hospital.

Submitted by Fran Broer

## **Women of CLC**

We have continued meeting every month for Bible Study. We normally meet on the 1st Saturday of every month. Renee Johnson continues to lead us every month. This year we focused on the minor prophets of the Bible. The study is open to all women. If you are interested, please join us.

On December 1, 2025, we held our annual Advent Dinner. It was well attended. We had three women who spoke on what Advent means to them. Karen Oaks played the piano so we could sing some Christmas carols prior to dinner. After the program, we enjoyed dinner and fellowship.

Respectfully submitted,  
Shirley Jett

## **Prayer Chain**

The email prayer chain is a digital network within the church where members share prayer requests. Any member of the church can submit prayer requests by emailing me ([malindawisz@aol.com](mailto:malindawisz@aol.com)) or by writing them on the attendance sheet included with the bulletin. Prayers are emailed each Monday to the group of approximately sixty individuals. If urgent requests come in throughout the week, those prayers are sent to the group as soon as possible.

This ministry has served as a comforting reminder that God is always waiting and available to hear our prayers. All those involved have been blessed to witness the power of prayer and to develop closer ties within our church family.

Respectfully submitted,  
Malinda Wisz

# CLC Financial Statements for Fiscal Year Ending December 31, 2025

Treasurer: Judith Hetzel

For the 2025 annual report, I have included information that I trust will enable you to be knowledgeable of the financial working of the church this year. The reports do not effectively show you the many transitions and changes we have had to make this year. One of the biggest transitions we made was the closing of the school. The 2024 budget does not reflect the closing at all, and so the planning budget for 2025 did not have any changes with the closing in mind. As we planned for 2026, we had to change the budget without the Christ Lutheran School.

I have included a chart comparing the actual income and expenditures for 2024 and 2025 and a chart comparing giving for 2024 and 2025.

Also, I have included the December financial reports to give you more details if you would like. I know the December report does not show the transitions and changes that have occurred during the year, but at least you can see how the year ended.

We have developed a budget for 2026 that is positive and I trust we will have a better year this coming year.

May God bless you as you continue to contribute to the church to fulfill our mission.

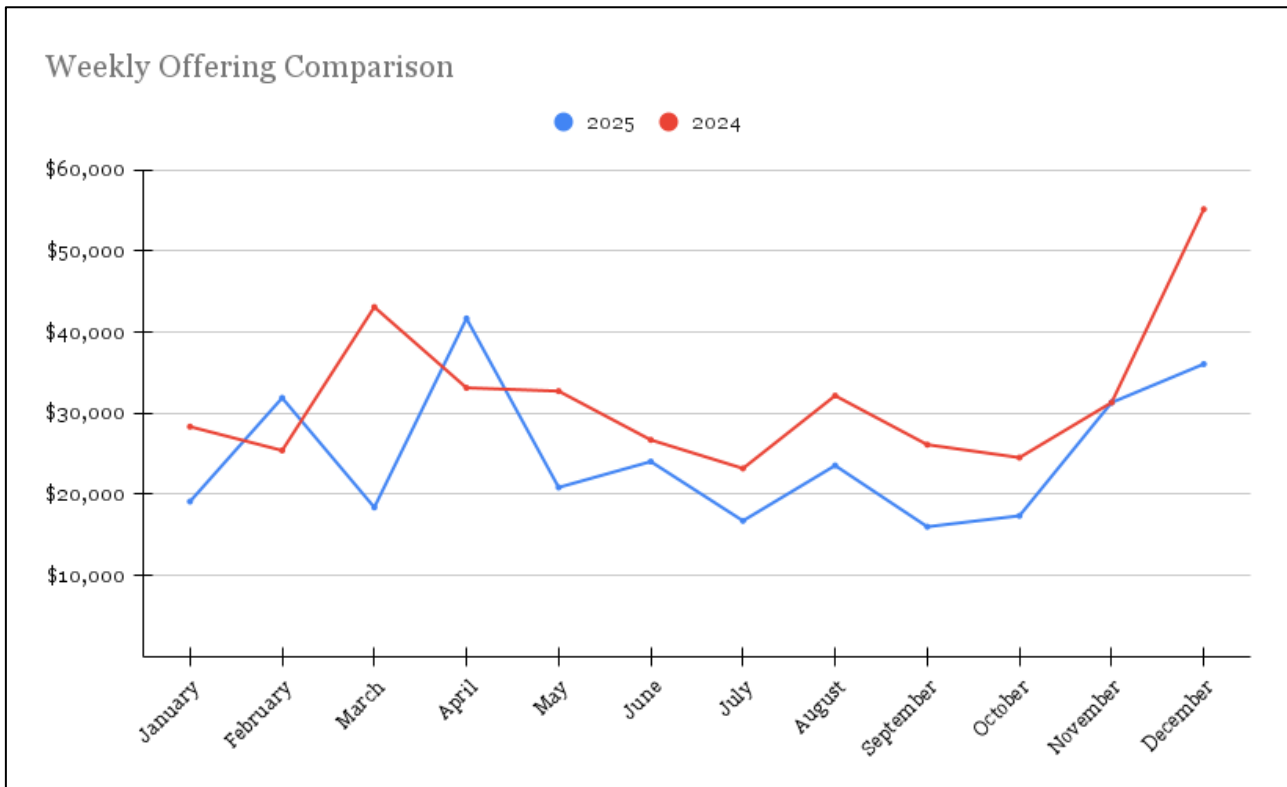
Sincerely,  
Judith Hetzel

## Cash Flow

<b>Cash on January 1, 2025</b>		\$334,000
<b>Budgeted Activities</b>		(62,000)
Weekly Offerings	297,000	
Other Income	90,000	
Salaries, Wages, & Related	(271,000)	
Facilities (Utilities, Insurance, etc.)	(106,000)	
Benevolence	(28,000)	
School Expenses	(25,000)	
Other Expenses	(19,000)	
<b>Dedicated Accounts</b>		(80,000)
HVAC System (Net of Donations)	(87,000)	
Endowment Fund Net Earnings	7,000	
<b>Cash on December 31, 2025</b>		\$192,000

## Weekly Offering Comparison

Month	2025	2024
<b>January</b>	\$19,109	\$28,339
<b>February</b>	\$31,889	\$25,403
<b>March</b>	\$18,386	\$43,094
<b>April</b>	\$41,680	\$33,128
<b>May</b>	\$20,848	\$32,724
<b>June</b>	\$24,032	\$26,705
<b>July</b>	\$16,728	\$23,189
<b>August</b>	\$23,547	\$32,160
<b>September</b>	\$15,996	\$26,119
<b>October</b>	\$17,345	\$24,526
<b>November</b>	\$31,312	\$31,318
<b>December</b>	\$36,059	\$55,157



# Statement of Financial Position

December 31, 2025

	Year Begin Balance	Year to Date Balance	Balance Last Month	This Month Change	Year to Date Change
<b>Assets</b>					
<b>GENERAL FUND</b>					
1000 B of A 61659-General Fund	104,541.28	51,483.97	67,642.51	(16,158.54)	(53,057.31)
1008 CD 3.75% due 02/28/26	123,310.28	64,044.70	63,421.27	623.43	(59,265.58)
1009 CD 3.75% due 05/28/26	0.00	63,969.80	63,577.12	392.68	63,969.80
1013 CD 4.00% due 1-31-26	105,783.74	12,749.18	12,625.07	124.11	(93,034.56)
<b>GENERAL FUND Totals:</b>	<b>333,635.30</b>	<b>192,247.65</b>	<b>207,265.97</b>	<b>(15,018.32)</b>	<b>(141,387.65)</b>
<b>ENDOWMENT FUND</b>					
1012 Thrivent TY4-136794	130,816.15	141,339.17	141,339.17	0.00	10,523.02
1015 InFaithCommunity Foundation	42,540.00	40,462.29	40,462.29	0.00	(2,077.71)
<b>ENDOWMENT FUND Totals:</b>	<b>173,356.15</b>	<b>181,801.46</b>	<b>181,801.46</b>	<b>0.00</b>	<b>8,445.31</b>
<b>DEDICATED</b>					
1001 B of A 61659-Dedicated Fund	0.00	0.00	0.00	0.00	0.00
<b>DEDICATED Totals:</b>	<b>0.00</b>	<b>0.00</b>	<b>0.00</b>	<b>0.00</b>	<b>0.00</b>
<b>Christ Lutheran School</b>					
1040 Due From CLS	6,991.78	4,290.39	3,895.77	394.62	(2,701.39)
<b>Christ Lutheran School Totals:</b>	<b>6,991.78</b>	<b>4,290.39</b>	<b>3,895.77</b>	<b>394.62</b>	<b>(2,701.39)</b>
<b>Total Assets:</b>	<b>513,983.23</b>	<b>378,339.50</b>	<b>392,963.20</b>	<b>(14,623.70)</b>	<b>(135,643.73)</b>
<b>Liabilities</b>					
<b>GENERAL FUND</b>					
2000 Payroll	0.00	0.00	0.00	0.00	0.00
2001 Accrued Benevolence	25,011.17	13,123.67	10,031.94	3,091.73	(11,887.50)
2002 B/A Credit Card -Trustee - Darrel Broer	0.00	29.00	(86.66)	115.66	29.00
2011 B/A Credit Card - Office-Carina McVeigh	150.71	550.03	52.98	497.05	399.32
2012 B/A Credit Card - BK - Robin Hill	42.98	5,184.30	(186.18)	5,370.48	5,141.32
2016 B/A Credit Card PreSch Michelle Turner	0.00	172.90	560.15	(387.25)	172.90
<b>GENERAL FUND Totals:</b>	<b>25,204.86</b>	<b>19,059.90</b>	<b>10,372.23</b>	<b>8,687.67</b>	<b>(6,144.96)</b>
<b>Total Liabilities:</b>	<b>25,204.86</b>	<b>19,059.90</b>	<b>10,372.23</b>	<b>8,687.67</b>	<b>(6,144.96)</b>
<b>Net Assets</b>					
<b>GENERAL FUND</b>					
3002 INCOME	0.00	0.00	0.00	0.00	0.00
3001 General Fund	245,728.95	245,728.99	245,728.99	0.00	0.04
<b>GENERAL FUND Totals:</b>	<b>245,728.95</b>	<b>245,728.99</b>	<b>245,728.99</b>	<b>0.00</b>	<b>0.04</b>
<b>Dedicated Accounts</b>					
Without Donor Restrictions	240,518.34	175,828.83	197,171.08	(21,342.25)	(64,689.51)
With Donor Restrictions	0.00	0.00	0.00	0.00	0.00
<b>Dedicated Accounts Totals:</b>	<b>240,518.34</b>	<b>175,828.83</b>	<b>197,171.08</b>	<b>(21,342.25)</b>	<b>(64,689.51)</b>

	<u>Year Begin Balance</u>	<u>Year to Date Balance</u>	<u>Balance Last Month</u>	<u>This Month Change</u>	<u>Year to Date Change</u>
<b>Current Period Changes to Net Assets</b>					
Income	0.00	0.00	0.00	0.00	0.00
GENERAL FUND	0.00	(62,278.22)	(60,309.10)	(1,969.12)	(62,278.22)
Current Period Changes to Net Assets Totals:	0.00	(62,278.22)	(60,309.10)	(1,969.12)	(62,278.22)
<b>Total Net Assets:</b>	486,247.29	359,279.60	382,590.97	(23,311.37)	(126,967.69)
<b>Total Liabilities &amp; Net Assets:</b>	511,452.15	378,339.50	392,963.20	(14,623.70)	(133,112.65)

# Statement of Activities

December 31, 2025

Account Shortcut and Description	Current Month Actual	Current Month Budget	YTD Actual	YTD Budget	Annual Budget	YTD Budget vs. YTD Actual
<b>Income</b>						
<b>General Fund</b>						
4000 Weekly Offering	36,059.21	30,583.33	296,936.89	367,000.00	367,000.00	(70,063.11)
4007 Dedicated Chinese Ministry	0.00	0.00	0.00	0.00	0.00	0.00
4010 Event Rental	275.00	333.33	8,904.00	4,000.00	4,000.00	4,904.00
4011 Trust Income	0.00	800.00	10,056.11	9,600.00	9,600.00	456.11
4012 Fund Raising	2,267.61	250.00	3,259.68	3,000.00	3,000.00	259.68
4014 NMDE Grant	0.00	0.00	0.00	0.00	0.00	0.00
4015 Synod Strategic Grant	0.00	0.00	0.00	0.00	0.00	0.00
4016 Facilities Rental	3,600.00	3,500.00	39,575.00	42,000.00	42,000.00	(2,425.00)
4017 Interest Earned	1,016.11	750.00	6,284.45	9,000.00	9,000.00	(2,715.55)
4018 School Rental	5,500.00	0.00	22,000.00	0.00	0.00	22,000.00
General Fund Totals:	48,717.93	36,216.66	387,016.13	434,600.00	434,600.00	(47,583.87)
Income Totals:	48,717.93	36,216.66	387,016.13	434,600.00	434,600.00	(47,583.87)
<b>Expense</b>						
<b>FACILITIES</b>						
5170 Electricity	782.44	1,500.00	18,567.79	18,000.00	18,000.00	(567.79)
5171 Gas	184.70	250.00	2,253.63	3,000.00	3,000.00	746.37
5175 Water	542.71	625.00	12,065.82	7,500.00	7,500.00	(4,565.82)
5176 Waste	353.16	200.00	3,292.54	2,400.00	2,400.00	(892.54)
5190 Telephone	249.37	400.00	4,641.50	4,800.00	4,800.00	158.50
5191 Internet	125.48	125.00	1,404.56	1,500.00	1,500.00	95.44
8986 Utilities	0.00	0.00	0.00	0.00	0.00	0.00
5130 Insurance	1,235.15	770.83	11,068.46	9,250.00	9,250.00	(1,818.46)
5165 Repair & Maintenance	4,045.38	1,366.67	14,135.69	16,400.00	16,400.00	2,264.31
5166 Janitorial	1,085.00	1,179.00	14,206.87	14,148.00	14,148.00	(58.87)
5167 Gardening	1,300.00	1,316.67	15,621.00	15,800.00	15,800.00	179.00
6001 Custodian	0.00	0.00	0.00	0.00	0.00	0.00
5160 Property Taxes	0.00	666.67	8,277.24	8,000.00	8,000.00	(277.24)
5199 County Leased Land Taxes	0.00	87.50	1,044.58	1,050.00	1,050.00	5.42
FACILITIES Totals:	9,903.39	8,487.34	106,579.68	101,848.00	101,848.00	(4,731.68)
<b>MINISTRIES</b>						
5965 Stewardship	0.00	0.00	0.00	0.00	0.00	0.00
5104 Worship Supplies	123.95	83.33	774.97	1,000.00	1,000.00	225.03
5270 Offering Envelopes	0.00	20.83	239.61	250.00	250.00	10.39
5295 Media Expenses	0.00	166.67	2,421.51	2,000.00	2,000.00	(421.51)
5464 Supply Pastor	0.00	0.00	0.00	0.00	0.00	0.00
5510 Copyright License	0.00	166.67	1,334.74	2,000.00	2,000.00	665.26
5541 Music Supplies	1,650.00	83.33	2,650.00	1,000.00	1,000.00	(1,650.00)

<b>Account Shortcut and Description</b>	<b>Current Month Actual</b>	<b>Current Month Budget</b>	<b>YTD Actual</b>	<b>YTD Budget</b>	<b>Annual Budget</b>	<b>YTD Budget vs. YTD Actual</b>
5161 Social Ministries	0.00	0.00	0.00	0.00	0.00	0.00
5116 Confirmation	0.00	33.33	99.75	400.00	400.00	300.25
5118 Christian Education	0.00	83.33	485.83	1,000.00	1,000.00	514.17
5454 VBS	0.00	0.00	0.00	0.00	0.00	0.00
5121 Fellowship	138.92	33.33	20.24	400.00	400.00	379.76
5412 Rally Day	0.00	0.00	0.00	0.00	0.00	0.00
5125 Evangelism	0.00	33.33	208.91	400.00	400.00	191.09
5102 Membership	0.00	250.00	2,039.41	3,000.00	3,000.00	960.59
5107 Chinese Ministry	0.00	0.00	0.00	0.00	0.00	0.00
<b>MINISTRIES Totals:</b>	<b>1,912.87</b>	<b>954.15</b>	<b>10,274.97</b>	<b>11,450.00</b>	<b>11,450.00</b>	<b>1,175.03</b>
<b>OFFICE EXPENSES</b>						
5210 Copy Machine	500.79	166.67	2,360.40	2,000.00	2,000.00	(360.40)
5260 Postage	0.00	83.33	249.32	1,000.00	1,000.00	750.68
5265 Supplies & Software	342.53	583.33	5,363.11	7,000.00	7,000.00	1,636.89
5290 WEB Site Cost	87.00	50.00	348.00	600.00	600.00	252.00
<b>OFFICE EXPENSES Totals:</b>	<b>930.32</b>	<b>883.33</b>	<b>8,320.83</b>	<b>10,600.00</b>	<b>10,600.00</b>	<b>2,279.17</b>
<b>STAFF</b>						
5467 Payroll Taxes	557.87	634.92	6,060.67	7,619.00	7,619.00	1,558.33
5456 Associate Pastor	0.00	0.00	0.00	0.00	0.00	0.00
5457 Associate Pastor Pension	0.00	0.00	0.00	0.00	0.00	0.00
5458 Associate Pastor Healthcare	0.00	0.00	0.00	0.00	0.00	0.00
5459 Associate Pastor Expenses	0.00	0.00	0.00	0.00	0.00	0.00
5460 Pastoral Compensation	8,333.34	8,333.33	100,000.08	100,000.00	100,000.00	(0.08)
5461 Pastor Pension	833.33	833.33	9,999.96	10,000.00	10,000.00	0.04
5462 Pastor Expense	0.00	300.00	1,369.84	3,600.00	3,600.00	2,230.16
5463 Pastoral Healthcare	1,662.67	1,712.75	19,952.04	20,553.00	20,553.00	600.96
5465 Pastor Cont Ed	0.00	41.67	500.00	500.00	500.00	0.00
5475 TEEM Pastor	3,000.00	3,000.00	36,000.00	36,000.00	36,000.00	0.00
5477 Pastor Re-location Expense	0.00	0.00	0.00	0.00	0.00	0.00
5440 Music Director	2,183.34	2,183.33	26,200.08	26,200.00	26,200.00	(0.08)
5450 Office Coordinator	2,717.00	3,033.33	25,789.00	36,400.00	36,400.00	10,611.00
5453 Youth Coordinator Comp	350.00	1,033.33	2,367.45	12,400.00	12,400.00	10,032.55
5455 Organist/Keyboard	2,042.00	2,083.33	25,104.00	25,000.00	25,000.00	(104.00)
5405 Bassist	650.00	433.33	5,450.00	5,200.00	5,200.00	(250.00)
5425 Drummer	650.00	433.33	5,450.00	5,200.00	5,200.00	(250.00)
5430 Guitarist	650.00	433.33	5,450.00	5,200.00	5,200.00	(250.00)
5415 Conferences	0.00	83.33	833.66	1,000.00	1,000.00	166.34
<b>STAFF Totals:</b>	<b>23,629.55</b>	<b>24,572.64</b>	<b>270,526.78</b>	<b>294,872.00</b>	<b>294,872.00</b>	<b>24,345.22</b>
<b>BENEVOLENCE</b>						
5605 Southwest California Synod	5,249.47	0.00	12,062.23	0.00	0.00	(12,062.23)
5610 ELCA World Hunger Relief	1,968.55	0.00	4,523.34	0.00	0.00	(4,523.34)
5615 ELCA Disaster Response	1,968.55	0.00	4,523.34	0.00	0.00	(4,523.34)
5626 CLS Scholarship	0.00	0.00	0.00	0.00	0.00	0.00
5676 Action Food Pantry	1,968.55	0.00	4,523.34	0.00	0.00	(4,523.34)
5678 Unallocated Benevolence	(8,063.39)	2,897.33	1,968.55	34,768.00	34,768.00	32,799.45
<b>BENEVOLENCE Totals:</b>	<b>3,091.73</b>	<b>2,897.33</b>	<b>27,600.80</b>	<b>34,768.00</b>	<b>34,768.00</b>	<b>7,167.20</b>

<b>Account Shortcut and Description</b>	<b>Current Month Actual</b>	<b>Current Month Budget</b>	<b>YTD Actual</b>	<b>YTD Budget</b>	<b>Annual Budget</b>	<b>YTD Budget YTD Actual</b>
<b>FINANCIAL</b>						
5905 Bank Charges	8.10	100.00	93.70	1,200.00	1,200.00	1,106.30
5908 Credit Card Rebates	(25.38)	(50.00)	(716.04)	(600.00)	(600.00)	116.04
5910 Deposit Correction	3.00	0.00	144.95	0.00	0.00	(144.95)
5940 Investments Gains & Losses	0.00	0.00	0.00	0.00	0.00	0.00
5955 Payroll charges	98.06	125.00	1,277.34	1,500.00	1,500.00	222.66
<b>FINANCIAL Totals:</b>	<b>83.78</b>	<b>175.00</b>	<b>799.95</b>	<b>2,100.00</b>	<b>2,100.00</b>	<b>1,300.05</b>
<b>School Expense</b>						
6000 Leased Land	6,079.98	0.00	6,079.98	0.00	0.00	(6,079.98)
6002 School A/C	0.00	0.00	0.00	0.00	0.00	0.00
6003 School Roofing	0.00	0.00	0.00	0.00	0.00	0.00
6004 School Misc	5,055.43	0.00	19,111.36	0.00	0.00	(19,111.36)
6051 School Repair & Maint	0.00	0.00	0.00	0.00	0.00	0.00
<b>School Expense Totals:</b>	<b>11,135.41</b>	<b>0.00</b>	<b>25,191.34</b>	<b>0.00</b>	<b>0.00</b>	<b>(25,191.34)</b>
<b>Expense Totals:</b>	<b>50,687.05</b>	<b>37,969.79</b>	<b>449,294.35</b>	<b>455,638.00</b>	<b>455,638.00</b>	<b>6,343.65</b>
<b>Income - Expense:</b>	<b>(1,969.12)</b>	<b>(1,753.13)</b>	<b>(62,278.22)</b>	<b>(21,038.00)</b>	<b>(21,038.00)</b>	<b>(41,240.22)</b>

# Dedicated Accounts

December 31, 2025

Account Shortcut and Description	Beginning Balance	Month Credits	Month Debits	YTD Credits	YTD Debits	Ending Balance
<b>DEDICATED</b>						
<b>MINISTRIES</b>						
8270 Mandarin Chinese Outreach	33,608.60	2,470.00	2,563.75	32,912.00	20,777.60	45,743.00
8213 Blanket Buddies	85.90	0.00	0.00	0.00	0.00	85.90
8235 Funeral Meals/Kitchen	41.48	100.00	0.00	100.00	0.00	141.48
8260 Meal for the Hungry	3,790.06	0.00	0.00	265.00	0.00	4,055.06
8160 Sunday School Offering	24.00	0.00	0.00	0.00	0.00	24.00
8164 Chapel	1,290.31	11.09	0.00	1,027.08	2,136.84	180.55
8395 Youth Ministries	1,866.29	0.00	0.00	22.51	141.83	1,746.97
8180 VBS	0.00	0.00	0.00	0.00	0.00	0.00
8950 Luiten Scholarship	15,635.31	124.11	1,000.00	4,195.44	1,500.00	18,330.75
8951 Luiten Fund Available Disbursement	2,237.10	0.00	0.00	459.92	2,697.02	0.00
8560 Music/Chancel Choir	2,955.68	710.00	0.00	1,210.00	0.00	4,165.68
8490 Women of Christ	231.26	0.00	111.51	0.00	111.51	119.75
8480 Stephen Ministry	219.39	0.00	0.00	0.00	0.00	219.39
<b>MINISTRIES Totals:</b>	<b>61,985.38</b>	<b>3,415.20</b>	<b>3,675.26</b>	<b>40,191.95</b>	<b>27,364.80</b>	<b>74,812.53</b>
<b>FELLOWSHIP</b>						
8150 Rally Sunday	0.00	0.00	0.00	0.00	0.00	0.00
<b>FINANCIAL</b>						
8985 PPP Forgiveness	0.00	0.00	0.00	0.00	0.00	0.00
8001 Endowment Fund	132,182.51	0.00	0.00	867.36	414.62	132,635.25
8002 Endowment Earnings	35,249.92	0.00	0.00	15,676.35	4,445.61	46,480.66
8003 Endowment Fund Expense	(2,701.78)	0.00	0.00	7,701.78	12,200.00	(7,200.00)
8955 Major Repair Reserve Fund	402.71	0.00	19,443.00	33,256.95	121,169.03	(87,509.37)
8916 Copy Machine-Color Copies	0.00	0.00	0.00	0.00	0.00	0.00
8980 Thrivent Choice	2,673.11	43.00	0.00	732.00	1,695.89	1,709.22
8940 In and Out Fund	10,726.49	33,188.52	34,870.71	184,559.53	180,385.48	14,900.54
<b>FINANCIAL Totals:</b>	<b>178,532.96</b>	<b>33,231.52</b>	<b>54,313.71</b>	<b>242,793.97</b>	<b>320,310.63</b>	<b>101,016.30</b>
<b>DEDICATED Totals:</b>	<b>240,518.34</b>	<b>36,646.72</b>	<b>57,988.97</b>	<b>282,985.92</b>	<b>347,675.43</b>	<b>175,828.83</b>
<b>Total for selected dedicated accounts:</b>	<b>240,518.34</b>	<b>36,646.72</b>	<b>57,988.97</b>	<b>282,985.92</b>	<b>347,675.43</b>	<b>175,828.83</b>

# Preschool Financial Statements for Fiscal Year Ending December 31, 2025

Bookkeeper: Editha Manalo

CHRIST LUTHERAN PRE-SCHOOL  
BALANCE SHEET AS OF JANUARY 2026

## ASSETS:

### Cash in Bank

BMO-Checking Account	\$ 48,593.20	
BMO-Money Market	11,400.60	
BMO-Blue Account	2,887.44	
Total Cash in Bank		\$ 62,881.24

### Other Assets

Church Payroll Owed	-	
Net Church Payroll	-	-

### Fixed Assets:

Building	226,183.03	
Accumulated Depreciation	(226,183.03)	
Total Other Assets		-

Total Assets \$ 62,881.24

### Liabilities

Accounts Payable	-	
Total Liabilities	-	

### Equity

Prior Year Fund Balance	21,589.31	
Retained Earnings	20,341.93	
Reserve	20,950.00	
Total Equity		\$ 62,881.24

Total Liabilities + Equity \$ 62,881.24

CHRIST LUTHERAN PRE=SCHOOL

	Jan-2026	Budget/Mo.	Actual -YTD	Annual Budget
TUITION	49,766.00	45,000.00	\$ 302,686.50	540,000.00
REGISTRATION	450.00	300.00	11,640.00	3,600.00
DELINQUENT FEE	105.00		630.00	
COMMITMENT FEE			400.00	
HOT LUNCH			3,332.00	
INTEREST INCOME	8.09		55.43	
<b>TOTAL INCOME</b>	<b>50,329.09</b>	<b>45,300.00</b>	<b>318,743.93</b>	<b>543,600.00</b>
<b>RESTRICTED FUNDS:</b>				
DONATIONS	5,000.00	100.00	6,281.25	1,200.00
SCHOOL FUNDRAISERS	392.00	550.00	462.74	6,600.00
SCHOLARSHIP FUND		250.00	-	3,000.00
<b>TOTAL</b>	<b>5,392.00</b>	<b>900.00</b>	<b>6,743.99</b>	<b>10,800.00</b>
<b>TOTAL INCOME</b>	<b>55,721.09</b>	<b>46,200.00</b>	<b>325,487.92</b>	<b>554,400.00</b>
<b>SALARIES &amp; PAYROLL TAXES</b>				
PS-DIRECTOR	4,216.29	4,216.28	24,225.16	50,595.36
BOOKKEEPER	2,960.38	2,960.38	20,857.19	35,524.56
RECEPTIONIST			4,602.04	
HANDYMAN			941.93	
NUTRITIONIST			4,222.04	
<b>TOTAL ADMIN COST</b>	<b>\$ 7,176.67</b>	<b>\$ 7,176.66</b>	<b>\$ 54,848.36</b>	<b>\$ 86,119.92</b>
Ps TEACHERS	19,426.38	27,000.00	166,204.32	324,000.00
<b>TOTAL SALARIES &amp; TAXES</b>	<b>\$ 26,603.05</b>	<b>\$ 34,176.66</b>	<b>\$ 221,052.68</b>	<b>\$ 410,119.92</b>
OFFICE EXPENSES (LOUNGE WATER)	14.24	90.00	446.57	1,080.00
OFFICE EXPENSES (H/D / COSTCO MEMBERSHI	109.48		388.53	-
TECHNOLOGY (PRAXI POWER) - FINAL			212.60	-
<b>MOBILE MODULAR - FINAL SETTLEMENT</b>			4,621.52	-
BILLING SOFTWARE (ACS TECHNOLOGIES)	76.00	76.00	532.00	912.00
PRESCHOOL DATA SOFTWARE		200.00	-	2,400.00
MARKETING/ADVERTISING	3,000.00	100.00	3,000.00	1,200.00
MERCHANT/CREDIT CARD PROCESSING FEES	509.42	471.25	2,889.89	5,655.00
PAYROLL SERVICE- PAYCOM	434.76	175.28	1,470.17	2,103.36
KITCHEN EXPENSES			787.10	-
PS SNACKS/SUPPLIES		500.00	1,305.09	6,000.00
CLASSROOM/EDUCATIONAL SUPPLIES		50.00	191.15	600.00
GARDENING SERVICE		200.00	2,400.00	2,400.00
MAINTENANCE/REPAIRS	1,198.30	400.00	3,283.93	4,800.00
PLUMBING			1,075.00	-
CLEANING SERVICES	1,600.00	1,600.00	10,464.09	19,200.00
FIRE INSPECTION (CITY OF WEST COVINA)			474.72	-

CHRIST LUTHERAN PRE=SCHOOL

	Jan-2026	Budget/Mo.	Actual -YTD	Annual Budget
FIRE EXTINGUISHERS SVC (ANNUAL SVC)			393.09	-
FIRST AID/AED TRAINING / CONFERENCES			560.00	-
CONFERENCES / PROF GROWTH FOR STAFF		40.00	85.87	480.00
JANITORIAL SUPPLIES	413.97	185.00	2,603.76	2,220.00
RICOH - LEASE	605.17	605.00	3,631.02	7,260.00
RICOH - LEASE / PROPERTY TAX-ANNUAL			229.47	-
RICOH - SUPPLIES/PRINTS		285.00	1,086.67	3,420.00
ELEA MEMBERSHIP - ANNUAL		35.00	430.00	420.00
PEST CONTROL	49.00	49.00	392.00	588.00
WORKERS' COMPENSATION		625.00	5,955.37	7,500.00
LONG TERM/SHORT-TERM DISABILITY INS.	317.25	317.25	1,619.90	3,807.00
INSURANCE-LIABILITY/MPP/UMBRELLA		525.00	3,244.57	6,300.00
UTILITIES (See breakdown below)	1,321.33	2,023.95	30,319.23	24,287.40
TOTAL OTHER EXPENSES	9,648.92	8,552.73	84,093.31	102,632.76
TOTAL EXPENSES	<u>\$ 36,251.97</u>	<u>\$ 42,729.39</u>	<u>\$ 305,145.99</u>	<u>\$ 512,752.68</u>
NET INCOME	<u>\$ 19,469.12</u>	<u>\$ 3,470.61</u>	<u>\$ 20,341.93</u>	<u>\$ 41,647.32</u>

* UTILITIES:				
WATER BILL	457.63		5,569.50	
EDISON	444.57	1,421.00	15,748.33	17,052.00
GAS	46.18	53.00	562.20	636.00
ATHENS SERVICES (TRASH)	353.16	253.00	3,507.15	3,036.00
PHONES/INTERNET	19.79	296.95	4,932.05	3,563.40
	<u>1,321.33</u>	<u>2,023.95</u>	<u>30,319.23</u>	<u>24,287.40</u>

# 2026 Approved Budget

Christ Lutheran Budget, 2026						
Account		2025 Budget	Actual 10/31	2026 Recommendation	Difference 2025 & 2026	
4000	Gen Budget Offerings	367,000	229,565	290,000	(77,000)	
4010	Event Rental	4,000	8,229	4,000	-	
4011	Trust Income	9,600	10,056	9,600	-	
4012	Fund Raising	3,000	992	3,000	-	
4016	Facilities Rental	42,000	29,375	43,200	1,200	
4017	Interst Income	9,000	5,268	4,500	(4,500)	
4018	School Rental	x	11,000	132,000	132,000	
4014	NMDE grant-payroll support			25,000	25,000	
4015	Synod Strategic Grant			25,000	25,000	
4007	Dedicated Ministry-Chinese Ministry			14,065	14,065	
<b>Income</b>		<b>\$ 434,600</b>		<b>\$ 550,365</b>	<b>\$ 115,765</b>	
<b>EXPENSES</b>						
<b>Ministries</b>						
Membership						
5102	Membership	3,000	2,039	3,000	-	
Worship						
5104	Worship Supplies	1,000	525	1,500	500	
5510	Copy right License	2,000	957	1,500	(500)	
5441	Music Supplies	1,000	1,000	1,000	-	
5295	Media Expense	2,000	2,422	4,000	2,000	
5270	Offering Envelopes	250	240	250	-	
5464	Supply Pastor	-		1,000	1,000	
Christian Ed						
5118	Christain Ed materials	1,000	486	1,000	-	
5116	Confirmation	400	100	400	-	
8180	VBS			1,000	1,000	
Fellowship						
5121	Fellowship	400	(111)	400	-	
8150	Rally Sunday			1,000	1,000	
Evangelism						
5125	Evangelism	400	209	600	200	
Stewardship						
5965	Expenses			300	300	
Social Ministries						
5161	Expenses			500	500	
<b>Facilities</b>						
5130	Insurance	9,250	8,125	22,987	13,737	11,494.00
	Insurance - preschool			(12,737)	(12,737)	

Account		2025 Budget	Actual 10/31	2026 Recommendation	Difference 2025 & 2026	
5160	Property Tax	8,000	3,997	8,600	600	
5165	Repair&Maintenance	16,400	10,316	13,000	(3,400)	
5166	Janitorial	14,148	12,037	15,000	852	
5167	Gardening	15,800	13,021	16,450	650	
5170	Electricity	18,000	16,969	50,000	32,000	16,500.00
	Preschool Reimbursement			(8,375)	(8,375)	
	School Reimbursement			(25,125)	(25,125)	
5171	Gas	3,000	1,998	7,000	4,000	2,310.00
	Preschool Reimbursement			(1,173)	(1,173)	
	School Reimbursement			(3,518)	(3,518)	
5175	Water	7,500	10,844	31,500	24,000	10,395.00
	Preschool Reimbursement			(5,276)	(5,276)	
	School Reimbursement			(15,829)	(15,829)	
5176	Waste	2,400	2,587	14,251	11,851	4,703.00
	Preschool Reimbursement			(2,387)	(2,387)	
	School Reimbursement			(7,161)	(7,161)	
5177	Telephone	4,800	4,143	4,800	-	
5179	Internet	1,500	1,154	1,500	-	
5199	Leased Land Tax	1,050	513	1,100	50	
6001	Custodian			17,500	17,500	8,750.00
	Preschool Reimbursement			(8,750)	(8,750)	
6004	Land Lease		1,520	18,791	18,791	
<b>Office Expenses</b>						
5210	Copy Machine	2,000	1,693	2,000	-	
5260	Postage	1,000	249	500	(500)	
5265	Supplies & Software	7,000	4,237	5,000	(2,000)	
5290	Website	600	261	400	(200)	
<b>Salaries</b>						
5460	Pastoral Comp.	100,000	83,333	100,000	-	
5475	TEEM Pastor	36,000	30,000	15,000	(21,000)	5 months
5456	Associate Pastor-Chinese Ministry			46,783		7 months
5453	Youth & Famiy	12,400	1,030	12,000	(400)	
5450	Office Coordin.	36,400	20,906	27,360	(9,040)	
5440	Music Director	26,200	21,833	26,200	-	
5455	Organist/Keybd.	25,000	21,020	24,504	(496)	
5405	Bassist	5,200	4,300	5,200	-	
5425	Drummer	5,200	4,300	5,200	-	
5430	Guitarist	5,200	4,300	5,200	-	
<b>Benefits</b>						

Account		2025 Budget	Actual 10/31	2026 Recommendation	Difference 2025 & 2026
5461	Pastor Pension	10,000	8,333	10,000	-
5463	Pastor Healthcare	20,553	16,627	21,600	1,047
5465	Pastor Cont. Ed.	500	500	500	-
5462	Pastor Expense	3,600	1,270	3,600	-
5457	Associate Pastor Pension			4,678	
5458	Associate Pastor Healthcare			11,666	
5459	Associate Pastor Expense			3,000	
<b>General Administration</b>					
5487	Payroll Taxes	7,619	4,938	8,656	1,037
5489	Payroll Charges	1,500	1,048	1,500	-
5905	Bank Charges	1,200	72	500	(700)
5908	C.Card Rebates	(600)	(634)	(600)	-
5910	Deposit Correct.	-	142	-	-
5940	Investment G & L	-	-	-	-
5415	Conferences	1,000	834	1,000	-
<b>Benevolence</b>					
5606	So Cal Synod	-	6,813		0
5610	ELCA World Hunger	-	2,555		0
5615	ELCADisaster Refie	-	2,555		0
5676	Action Food Pantry	-	2,555		0
5626	CLS Scholarship	-	-		0
5678	Unallocated Bene.	34,768	6,964	38765	3997
<b>School Facilities</b>					
6002	A/C			10,000	10,000
6003	Roofing			8,000	8,000
6051	Repair&Maintenance			2,000	2,000
<b>Expenses</b>		<b>\$ 455,638</b>	<b>\$ 345,086</b>	<b>\$ 549,811</b>	<b>\$ 28,046</b>
<b>Net Income/(Loss)</b>		<b>\$ (21,038)</b>		<b>\$ 554</b>	<b>\$ 87,719</b>

**Budget Comparisons (Page 1 of 2)**

<b>Christ Lutheran Comparison</b>				
Account	2024 Actual	2025 Actual	Difference 2024 & 2025	
<b>INCOME</b>				
4000	Gen Budget Offerings	381,867	296,936	84,931
4010	Event Rental	11,668	8,904	2,764
4011	Trust Income	9,584	10,056	472
4012	Fund Raising	1,846	3,259	1,413
4016	Facilities Rental	36,150	39,575	3,425
4017	Interest Income	10,339	6,284	4,055
4018	School Rental		22,000	22,000
<b>Total Income</b>		<b>\$ 451,454</b>	<b>\$ 387,014</b>	<b>\$64,440</b>
<b>EXPENSES</b>				
<b>Ministries</b>				
<b>Membership</b>				
5102	Membership	-	2,039	0
<b>Worship</b>				
5104	Worship Supplies	897	774	897
5510	Copy right License	923	1,334	923
5441	Music Supplies	1,000	2,650	1,000
5295	Media Expense	1,193	2,421	1,193
5270	Offering Envelopes	25	239	25
5464	Supply Pastor	-	-	0
<b>Christian Ed</b>				
5118	Christain Ed materials	131	486	131
5116	Confirmation	351	100	351
5454	VBS		-	0
<b>Fellowship</b>				
5121	Fellowship	(1,301)	20	1,301
5412	Rally Sunday			0
<b>Evangelism</b>				
5125	Evangelism	247	209	247
<b>Manderin Service</b>				
5107	Chinese Ministry	(9,000)	-	9,000
<b>Stewartship</b>				
5965	Expenses		-	0
<b>Social Ministries</b>				
5161	Expenses		-	0
<b>Facilities</b>				
5130	Insurance	10,944	11,068	124
5160	Property Tax	8,476	8,277	199
5165	Repair&Maintenance	14,177	14,136	41
5166	Janitorial	13,061	14,207	1,146
5167	Gardening	15,631	15,621	10
5170	Electricity	21,285	18,568	2,717
5171	Gas	2,110	2,254	144
5175	Water	8,493	12,066	3,573
5176	Waste	2,312	3,293	981
5177	Telephone	4,838	4,642	196
5179	Internet	1,264	1,405	141
5199	Leased Land Tax	505	1,045	540
6001	Custodian		-	0
6004	Land Lease		6,080	6,080

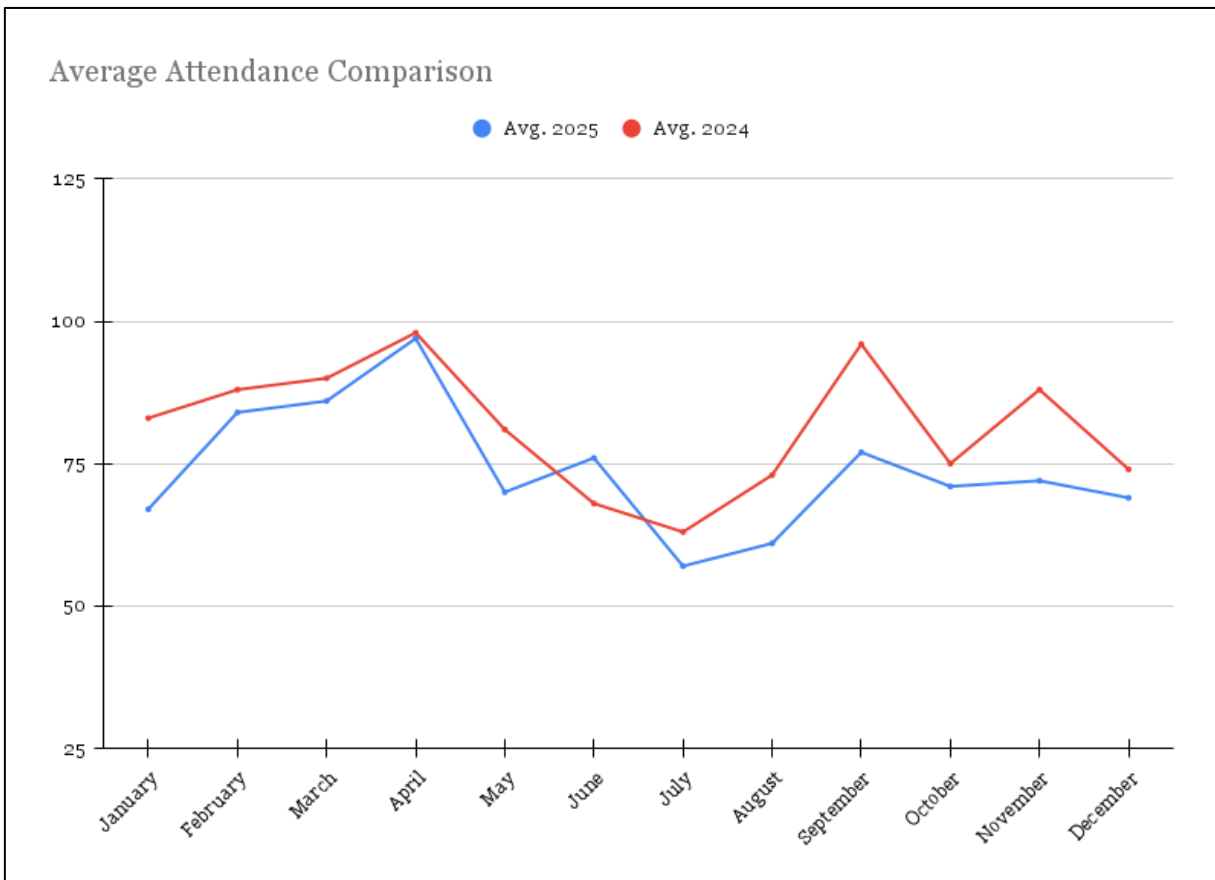
**Budget Comparisons (Page 2 of 2)**

Account		2024 Actual	2025 Actual	Difference 2024 & 2025
<b>Office Expenses</b>				
5210	Copy Machine	2,085	2,360	275
5260	Postage	-	249	249
5265	Supplies & Software	7,382	5,363	2,019
5290	Website	377	348	29
<b>Salaries</b>				
5460	Pastoral Comp.	100,000	100,000	0
5475	TEEM Pastor	45,000	36,000	9,000
5453	Youth & Famiy	12,000	2,367	9,633
5450	Office Coordin.	35,370	25,789	9,581
5440	Music Director	26,200	26,200	0
5455	Organist/Keybd.	24,504	25,104	600
5405	Bassist	5,200	5,450	250
5425	Drummer	5,200	5,450	250
5430	Guitarist	5,200	5,450	250
<b>Benefits</b>				
5461	Pastor Pension	9,999	10,000	1
5463	Pastor Healthcare	19,887	19,952	65
5465	Pastor Cont. Ed.	420	500	80
5462	Pastor Expense	1,516	1,370	146
<b>General Administration</b>				
5467	Payroll Taxes	9,797	6,061	3,736
5955	Payroll Charges	1,467	1,277	190
5905	Bank Charges	872	94	778
5908	C.Card Rebates	(1,078)	(716)	362
5910	Deposit Correct.	146	145	1
5940	Investment G & L	(5)	0	5
5415	Conferences	500	834	334
<b>Benevolence</b>				
5605	So Cal Synod		12,062	12,062
5610	ELCA World Hunger		4,523	4,523
5615	ELCADisaster Refie		4,523	4,523
5676	Action Food Pantry		4,523	4,523
5626	CLS Scholarship		0	0
5678	Unallocated Bene.	36,116	1,969	34,147
<b>School Facilities</b>				
6002	A/C		0	0
6003	Roofing		0	0
6004	School Misc.		19,111	19,111
6051	Repair&Maintenance		0	0
<b>Expenses</b>		<b>\$ 445,717</b>	<b>\$ 430,180</b>	<b>15,537</b>
<b>Net Income/(Loss)</b>		<b>\$ 5,737</b>	<b>\$ (43,166)</b>	<b>48,903</b>

# Worship Attendance

	9:30am Average 2025	9:30am Average 2024
<b>January</b>	67	83
<b>February</b>	84	88
<b>March</b>	86	90
<b>April</b>	97	98
<b>May</b>	70	81
<b>June</b>	76	68
<b>July</b>	57	63
<b>August</b>	61	73
<b>September</b>	77	96
<b>October</b>	71	75
<b>November</b>	72	88
<b>December</b>	69	74

**2025 Average Weekly Attendance:**      82  
**2024 Average Weekly Attendance:**      74



# Membership

## Baptized:

Kaia Dayal	4/20/2025
Claire Yee	6/15/2025
Madi Yee	6/15/2025
Taoyar Liao	8/10/2025
Frankie Jay Carr	10/5/2025
Lily Louise Carr	10/5/2025

## Confirmed:

Jay Arnold	6/15/2025
------------	-----------

## Transferred/Affirmed:

Jianwu (Young) Song	2/9/2025
Kejia (Lydia) Liu	2/9/2025
John Tseng	2/9/2025
Joana Tseng	2/9/2025
Tao Li	2/9/2025
Julee Sun	2/9/2025
Dacui Wang	2/9/2025

*In 2025, we celebrated the gift of Eternal Life for these fellow members of the body of Christ.*

Douglas Solem (December 18, 1936 – November 14, 2024)

Janet Anderson (October 31, 1939 – December 12, 2024)

Gary Schaich (October 14, 1945 – January 8, 2025)

Dolores Calabrese (July 5, 1937 – January 12, 2025)

Louise Petry (May 27, 1940 – January 19, 2025)

James Hetzel (October 2, 1954 – February 15, 2025)

Renee Bacon (December 15, 1963 – May 14, 2025)

Crisanta Rademaker (October 25, 1932 – July 23, 2025)

Gertie Selcho (March 30, 1941 – July 31, 2025)

Harold Hanneman (May 8, 1928 – August 22, 2025)

## A MESSAGE FROM PRESIDING BISHOP YEHIEL CURRY

Dear friends in Christ,

As Lutherans, we are set free to love our neighbors and seek justice. In Colossians 2, we read: “As you therefore have received Christ Jesus the Lord, continue to walk in him, rooted and built up in him and established in the faith, just as you were taught, abounding in thanksgiving” (6-7).

I am abounding in thankfulness for you, church. You are an integral part of this mission as we envision a world experiencing the difference God’s grace and love in Christ make for all people and creation. The ministries of congregations including yours, our synods and the ELCA churchwide organization are all working together today and every day so more people may know the way of Jesus and discover community, justice and love. From providing food to people experiencing hunger, to helping train the next generation of leaders that will lead this church, your support is at work here at home and around the world.

Your generosity to each of the three expressions of the church — your congregation, your synod and the churchwide organization — has made it possible for us to do this work

together. Your financial resources, your time volunteering and accompanying others, and your voices are so valued.

As we look ahead to the coming year, I encourage you to continue to walk in Christ, remembering you are rooted and established in faith, and free to love and serve your neighbors. Thank you, church, for the ways you connect with and support our siblings across the ELCA and in our communities.

In Christ,



A handwritten signature in black ink, appearing to read 'Yehiel Curry'.

The Rev. Yehiel Curry  
Presiding Bishop  
Evangelical Lutheran  
Church in America

“As you therefore have received Christ Jesus the Lord, continue to walk in him, rooted and built up in him and established in the faith, just as you were taught, abounding in thanksgiving.”

—Colossians 2:6-7

# THROUGH YOUR GENEROSITY, GOD IS AT WORK ACROSS THE ELCA.

## MISSION SUPPORT

A portion of your offering, called Mission Support, advances the ministry of our church, helping the ELCA nurture Christian community, raise up leaders, serve our neighbors and strive for justice.

## ELCA WORLD HUNGER

Part of our church's long tradition of meeting human needs, ELCA World Hunger testifies to our hope for and commitment to God's promise of a time when we will hunger and thirst no more. ELCA World Hunger walks alongside communities in more than 60 countries — including the United States — to create unique solutions to hunger and poverty.

## LUTHERAN DISASTER RESPONSE

Lutheran Disaster Response shares God's hope, healing and renewal with people whose lives have been disrupted by disasters in the United States and around the world. When the dust settles and the headlines change, we stay to provide ongoing assistance to those in need.

## WHERE NEEDED MOST

Where Needed Most supports the powerful ways we work together around the world — supporting leaders, inspiring young people, fueling ministries and championing global mission. Gifts to Where Needed Most support and sustain the people, congregations, synods and ministries working around the world to realize the hope-filled future God promises.



Evangelical  
Lutheran Church  
in America

Sign up to hear more stories of impact from the ELCA churchwide organization at [ELCA.org/subscribe](https://www.elca.org/subscribe).

Read about Mission Support and learn more at [LivingLutheran.org/SOFIA](https://www.livinglutheran.org/SOFIA).